



EV Charger Catalog










	N.America	Japan	EU and the rest of markets	China	All Markets except EU
AC	 J1772 (Type 1)	 J1772 (Type 1)	 Mennekes (Type 2)	 GB/T	
DC	 CCS1	 CHAdeMO	 CCS2	 GB/T	 Tesla NACS



Table of Contents

Mode 2 Charger	P01-03
Mode 3 Type 1 to Type 2 Charging Plug	P04
Mode 3 Type 2 to Type 2 Charging Plug	P05
Wallmount AC Charger	P06-08
Wallmount Type 2 AC Charger	P09
AC Charging Adapter	P10-12
DC Charging Adapter	P12-13
AC Type 1 Charging Plug	P14-15
DC Charging Plug	P16
AC Charging Inlet & Socket	P17
Combo Charging Socket	P18



Mode 2 Charger



TYPE 2

Input & Output

Part Name	Type 2 1P16A Charger	Type 2 1P32A Charger	Type 2 3P16A Charger
Model No.	AT-M2T2116R	AT-M2T2132R	AT-M2T2316R
Charging Interface Type	Type 2	Type 2	Type 2
Input Voltage	1AC 230V±10%	1AC 230V±10%	3AC 400V±10%
Input Frequency	50/60 HZ	50/60 HZ	50/60 HZ
Output Voltage	1AC 230V±10%	1AC 230V±10%	3AC 400V±10%
Max. Output Power	3.6KW	7.2KW	11KW
Max. Output Current	16A	32A	16A
Connection Type	Plug		
Cable Length	Customized		
Number of connection	1		

Protection

Over Voltage Protection	Yes
Under Voltage Protection	Yes
Over Current Protection	Yes
Over Load Protection	Yes
Short Circuit Protection	Yes
Earth Leakage Protection	Yes
Over-temp Protection	Yes
Lightning Protection	Yes

Function & Accessory

RCD	TYPE A+DC.6mA (Option or not)
LCD Display	Yes
LED Indicator	Yes
Predict Charging Time Set	Yes
Intelligent Current Adjustment	Yes

Working Environment

IP Grade	In-Cable box: IP55, Charging Connector: IP54
Operating Temperature	-30°C~50°C
Storage Temperature	-40°C to +85°C
Relative Humidity	≤95% non-condensation
Maximum Altitude	2000M
Cooling Mode	Natural cooling
Standby Power Loss	≤5w

Mechanical & Others

Certification	CE, TUV, COC, FCC, ROHS
---------------	-------------------------



Mode 2 Charger



TYPE 2



TYPE 1

Input & Output

Part Name	Type 1 1P16A Charger Type 2 1P16A Charger	Type 1 1P32A Charger Type 2 1P32A Charger	Type 2 3P16A Charger	Type 2 3P32A Charger
Model No.	AT-M2T1116S AT-M2T2116S	AT-M2T1132S AT-M2T2132S	AT-M2T2316S	AT-M2T2332S
Charging Interface Type	Type 1/Type 2	Type 1/Type 2	Type 2	Type 2
Input Voltage	1AC 230V±10%	1AC 230V±10%	3AC 400V±10%	3AC 400V±10%
Input Frequency	50/60 HZ	50/60 HZ	50/60 HZ	50/60 HZ
Output Voltage	1AC 230V±10%	1AC 230V±10%	3AC 400V±10%	3AC 400V±10%
Max. Output Power	3.6KW	7.2KW	11KW	22KW
Max. Output Current	16A	32A	16A	32A
Connection Type	Plug			
Cable Length	Customized			
Number of connection	1			

Protection

Over Voltage Protection	Yes
Under Voltage Protection	Yes
Over Current Protection	Yes
Over Load Protection	Yes
Short Circuit Protection	Yes
Earth Leakage Protection	Yes
Over-temp Protection	Yes
Lightning Protection	Yes

Function & Accessory

RCD	TYPE A+DC.6mA (Option or not)
LCD Display	Yes
LED Indicator	Yes
Predict Charging Time Set	Yes
Intelligent Current Adjustment	Yes

Working Environment

IP Grade	In-Cable box: IP66, Charging Connector: IP67
Operating Temperature	-30°C~50°C
Storage Temperature	-40°C to +85°C
Relative Humidity	≤95% non-condensation
Maximum Altitude	2000M
Cooling Mode	Natural cooling
Standby Power Loss	≤5w

Mechanical & Others

Certification	CE, TUV, COC, FCC, ROHS
---------------	-------------------------



Mode 2 Charger



TYPE 2



TYPE 1



APP

Input & Output

Part Name	Type 1 1P16A Charger Type 2 1P16A Charger	Type 1 1P32A Charger Type 2 1P32A Charger	Type 2 3P32A Charger
Model No.	AT-M2T1116S AT-M2T2116S	AT-M2T1132S AT-M2T2132S	AT-M2T2332S
Charging Interface Type	Type 1/Type 2	Type 1/Type 2	Type 2
Input Voltage	1AC 230V±10%	1AC 230V±10%	3AC 400V±10%
Input Frequency	50/60 HZ	50/60 HZ	50/60 HZ
Output Voltage	1AC 230V±10%	1AC 230V±10%	3AC 400V±10%
Max. Output Power	3.6KW	7.2KW	11KW
Max. Output Current	16A	32A	16A
Connection Type	Plug		
Cable Length	Customized		
Number of connection	1		

Protection

Over Voltage Protection	Yes
Under Voltage Protection	Yes
Over Current Protection	Yes
Over Load Protection	Yes
Short Circuit Protection	Yes
Earth Leakage Protection	Yes
Over-temp Protection	Yes
Lightning Protection	Yes

Function & Accessory

Human-computer Interaction	APP (Option or not)
RCD	TYPE A+DC.6mA (Option or not)
Support	WIFI/Bluetooth (Option or not)
LCD Display	Yes
LED Indicator	Yes
Predict Charging Time Set	Yes
Intelligent Current Adjustment	Yes

Working Environment

IP Grade	In-Cable box: IP66, Charging Connector: IP67
Operating Temperature	-30°C~50°C
Storage Temperature	-40°C to +85°C
Relative Humidity	≤95% non-condensation
Maximum Altitude	2000M
Cooling Mode	Natural cooling
Standby Power Loss	≤5w

Mechanical & Others

Certification	CE, TUV, COC, FCC, ROHS
---------------	-------------------------



Mode 3 Type 1 to Type 2 Charging Plug



TYPE 1
Female Plug



TYPE 2
Male Plug

Input & Output

Part Name	Type 1 to Type 2 1P16A Charging Plug	Type 1 to Type 2 1P32A Charging Plug
Model No.	AT-M3T1T2116P	AT-M3T1T2132P
Charging Interface Type	Type 1+Type 2	Type 1+Type 2
Input Voltage	1AC 230V±10%	3AC 400V±10%
Input Frequency	50/60 HZ	50/60 HZ
Output Voltage	1AC 230V±10%	3AC 400V±10%
Max. Output Power	3.6KW	7.2KW
Max. Output Current	16A	32A
Connection Type	Plug	
Cable Length	Customized	

Core Material

Shell	Thermoplastic, flame retardant grade UL94V-0
Connector Pin	Copper alloy, silver plating
Cable	Inner copper with TPE/TPU +5m(or customized)

Electrical&Mechanical Performance

Insulation Resistance	>1000MΩ (DC500V)
Terminal Temperature Rise	<50K
Withstand Voltage	2000V
Mechanical Life(Normal use)	>10000 Times
Mating and UN-mating Force	45N < F < 100N
Contact Resistance	0.5mΩ Max
Impact of external Force	1M drop and 2T Run Over Pressure

Working Environment

IP Grade	Charging Connector: IP67
Operating Temperature	-30°C~50°C
Storage Temperature	-40°C to +85°C
Relative Humidity	≤95% non-condensation
Maximum Altitude	2000M
Cooling Mode	Natural cooling

Mechanical & Others

Certification	CE, TUV, COC, ROHS
---------------	--------------------



Mode 3 Type 2 to Type 2 Charging Plug



TYPE 2
Female Plug



TYPE 2
Male Plug

Input & Output

Part Name	Type 2 to Type 2 1P16A/1P32A Charging Plug		Type 2 to Type 2 3P16A/3P32A Charging Plug	
	AT-M3T2T2116P	AT-M3T2T2132P	AT-M3T2T2316P	AT-M3T2T2332P
Model No.	AT-M3T2T2116P	AT-M3T2T2132P	AT-M3T2T2316P	AT-M3T2T2332P
Charging Interface Type	Type 2+Type 2	Type 2+Type 2	Type 2+Type 2	Type 2+Type 2
Input Voltage	1AC 230V±10%	1AC 230V±10%	3AC 400V±10%	3AC 400V±10%
Input Frequency	50/60 HZ	50/60 HZ	50/60 HZ	50/60 HZ
Output Voltage	1AC 230V±10%	1AC 230V±10%	3AC 400V±10%	3AC 400V±10%
Max. Output Power	3.6KW	7.2KW	11KW	22KW
Max. Output Current	16A	32A	16A	32A
Connection Type	Plug			
Cable Length	Customized			

Core Material

Shell	Thermoplastic, flame retardant grade UL94V-0
Connector Pin	Copper alloy, silver plating
Cable	Inner copper with TPE/TPU +5m(or customized)

Electrical&Mechanical Performance

Insulation Resistance	>1000MΩ (DC500V)
Terminal Temperature Rise	<50K
Withstand Voltage	2000V
Mechanical Life(Normal use)	>10000 Times
Mating and UN-mating Force	45N < F < 100N
Contact Resistance	0.5mΩ Max
Impact of external Force	1M drop and 2T Run Over Pressure

Working Environment

IP Grade	Charging Connector: IP67
Operating temperature	-30°C~50°C
Storage Temperature	-40°C to +85°C
Relative humidity	≤95% non-condensation
Maximum altitude	2000M
Cooling mode	Natural cooling

Mechanical & Others

Certification	CE, TUV, COC, ROHS
---------------	--------------------



Wallmount AC Charger



TYPE 2



TYPE 1



APP

Input & Output

Part Name	Wallmount AC Charger Type 1/Type 2 1P32A	Wallmount AC Charger Type 2 3P16A	Wallmount AC Charger Type 2 3P32A
Model No.	AT-WT1132-1 AT-WT2132-1	AT-WT2316-1	AT-WT2332-1
Charging Interface Type	Type 1/Type 2	Type 2	Type 2
Input Voltage	1AC 230V±10%	3AC 400V±10%	3AC 400V±10%
Input Frequency	50/60 HZ	50/60 HZ	50/60 HZ
Output Voltage	1AC 230V±10%	3AC 400V±10%	3AC 400V±10%
Max. Output Power	7KW	11KW	22KW
Max. Output Current	32A	16A	32A
Connection Type	Plug		
Cable Length	Customized		
Number of connection	1		

Protection

Over Voltage Protection	Yes
Under Voltage Protection	Yes
Over Current Protection	Yes
Over Load Protection	Yes
Short Circuit Protection	Yes
Earth Leakage Protection	Yes
Over-temp Protection	Yes
Lightning Protection	Yes

Function & Accessory

Communication	WIFI
Human-computer Interaction	APP
RCD	TYPE A+DC.6mA
Support	RFID/WIFI/Bluetooth
LED Indicator	Yes
Emergency Stop Button	Yes
Intelligent Current Adjustment	Yes
Loading Balance	Yes (Option or not)

Working Environment

IP Grade	In-Cable box: IP55, Charging Connector: IP67
Operating Temperature	-30°C~50°C
Storage Temperature	-40°C to +85°C
Relative Humidity	≤95% non-condensation
Maximum Altitude	2000M
Cooling Mode	Natural cooling
Standby Power Loss	≤5w

Mechanical & Others

Dimension(W*H*D)	340mm*160mm*162mm		
Weight (kg)	4.2	4.2	5.2
Certification	CE, TUV, COC, FCC, ROHS		



Wallmount AC Charger



TYPE 2



TYPE 1



APP

Input & Output

Part Name	Wallmount AC Charger Type 1/Type 2 1P32A	Wallmount AC Charger Type 2 3P16A	Wallmount AC Charger Type 2 3P32A
Model No.	AT-WT1132-2 AT-WT2132-2	AT-WT2316-2	AT-WT2332-2
Charging Interface Type	Type 1/Type 2	Type 2	Type 2
Input Voltage	1AC 230V±10%	3AC 400V±10%	3AC 400V±10%
Input Frequency	50/60 HZ	50/60 HZ	50/60 HZ
Output Voltage	1AC 230V±10%	3AC 400V±10%	3AC 400V±10%
Max. Output Power	7KW	11KW	22KW
Max. Output Current	32A	16A	32A
Connection Type	Plug		
Cable Length	Customized		
Number of connection	1		

Protection

Over Voltage Protection	Yes
Under Voltage Protection	Yes
Over Current Protection	Yes
Over Load Protection	Yes
Short Circuit Protection	Yes
Earth Leakage Protection	Yes
Over-temp Protection	Yes
Lightning Protection	Yes

Function & Accessory

Communication	WIFI
Human-computer Interaction	APP
RCD	TYPE B
LED Indicator	Yes
Emergency Stop Button	Yes
Intelligent Current Adjustment	Yes

Working Environment

IP Grade	In-Cable box: IP55, Charging Connector: IP67
Operating Temperature	-30°C~50°C
Storage Temperature	-40°C to +85°C
Relative Humidity	≤95% non-condensation
Maximum Altitude	2000M
Cooling Mode	Natural cooling
Standby Power Loss	≤5w

Mechanical & Others

Dimension(W*H*D)	490mm*320mm*270mm		
Weight (kg)	7.9	8.5	9
Certification	CE, TUV, COC, FCC, ROHS		



Wallmount AC Charger



TYPE 2



TYPE 1

Input & Output

Part Name	Wallmount AC Charger Type 1/Type 2 1P32A	Wallmount AC Charger Type 2 3P16A	Wallmount AC Charger Type 2 3P32A
Model No.	AT-WT1132-3 AT-WT2132-3	AT-WT2316-3	AT-WT2332-3
Charging Interface Type	Type 1/Type 2	Type 2	Type 2
Input Voltage	1AC 230V±10%	3AC 400V±10%	3AC 400V±10%
Input Frequency	50/60 HZ	50/60 HZ	50/60 HZ
Output Voltage	1AC 230V±10%	3AC 400V±10%	3AC 400V±10%
Max. Output Power	7KW	11KW	22KW
Max. Output Current	32A	16A	32A
Connection Type	Plug		
Cable Length	Customized		
Number of connection	1		

Protection

Over Voltage Protection	Yes
Under Voltage Protection	Yes
Over Current Protection	Yes
Over Load Protection	Yes
Short Circuit Protection	Yes
Earth Leakage Protection	Yes
Over-temp Protection	Yes
Lightning Protection	Yes

Function & Accessory

Communication	WIFI
Human-computer Interaction	APP
RCD	TYPE B
LED Indicator	Yes
Emergency Stop Button	Yes
Intelligent Current Adjustment	Yes
Loading Balance	Yes (Option or not)

Working Environment

IP Grade	In-Cable box: IP55, Charging Connector: IP67
Operating Temperature	-30°C~50°C
Storage Temperature	-40°C to +85°C
Relative Humidity	≤95% non-condensation
Maximum Altitude	2000M
Cooling Mode	Natural cooling
Standby Power Loss	≤5w

Mechanical & Others

Dimension(W*H*D)	490mm*320mm*270mm		
Weight (kg)	7.9	8.5	9
Certification	CE, TUV, COC, FCC, ROHS		



Wallmount Type 2 AC Charger



Input & Output

Part Name	Wallmount AC Charger Type 2 1P32A	Wallmount AC Charger Type 2 3P16A	Wallmount AC Charger Type 2 3P32A
Model No.	AT-SWT2132	AT-SWT2316	AT-SWT2332
Charging Interface Type	Type 2	Type 2	Type 2
Input Voltage	1AC 230V±10%	3AC 400V±10%	3AC 400V±10%
Input Frequency	50/60 HZ	50/60 HZ	50/60 HZ
Output Voltage	1AC 230V±10%	3AC 400V±10%	3AC 400V±10%
Max. Output Power	7KW	11KW	22KW
Max. Output Current	32A	16A	32A
Connection Type	Plug		
Cable Length	Customized		
Number of connection	1		

Protection

Over Voltage Protection	Yes
Under Voltage Protection	Yes
Over Current Protection	Yes
Over Load Protection	Yes
Short Circuit Protection	Yes
Earth Leakage Protection	Yes
Over-temp Protection	Yes
Lightning Protection	Yes

Function & Accessory

RCD	TYPE A+DC.6mA
Support	RFID
LED Indicator	Yes
Emergency Stop Button	Yes
Intelligent Current Adjustment	Yes
Loading Balance	Yes (Option or not)

Working Environment

IP Grade	IP55
Operating Temperature	-30°C~50°C
Storage Temperature	-40°C to +85°C
Relative Humidity	≤95% non-condensation
Maximum Altitude	2000M
Cooling Mode	Natural cooling
Standby Power Loss	≤5w

Mechanical & Others

Dimension(W*H*D)	340mm*160mm*162mm		
Weight (kg)	4.2	4.2	5.2
Certification	CE, TUV, COC, FCC, ROHS		



AC Charging Adapter



Part Name: Type 2 Inlet to Type 1 Plug
 Model No.: AT-T2IT132P



Part Name: Type 1 Inlet to Type 2 Plug
 Model No.: AT-T1IT232P

Electrical Performance

Charging Interface Type	Type 2 to Type 1	Type 1 to Type 2
Rated Current	32A max	32A max
Rated Power	7KW max	7KW max
Operation Voltage	110-250V	110-250V
Contact Resistance	0.5MΩ MAX	
Termical Temperature Rise	<50K	
Withstand Voltage	2000V	

Mechanical Properties

Mechanical Life	>10000 times
Coupled Insertion Force	45N<F<80N

Protection Information

Protection Class	IP54
Protection Function	Dustproof

Working Environment

Operating Temperature	-30°C~85°C
Storage Temperature	-30°C~85°C

Applied Materials

Case Material	PC+ABS
Flame Retardant Grade	UL94 V-0
Terminal	Copper alloy, silver plating



AC Charging Adapter



Part Name:Type 1 Inlet to Tesla Plug
 Model No.:AT-T1ITSLA80P



Part Name:Type 2 Inlet to Tesla Plug
 Model No.:AT-T2ITSLA80P



Part Name:Tesla Inlet to Type 1 Plug
 Model No.:AT-TSLAIT180P



Part Name:Tesla Inlet to Type 2 Plug
 Model No.:AT-TSLAIT260P

Electrical Performance

Charging Interface Type	Type 1 to Tesla	Type 2 to Tesla	Tesla to Type 1	Tesla to Type 2
Rated Current	80A max	80A max	80A max	60A max
Rated Power	20KW max	20KW max	20KW max	11KW max
Operation Voltage	110-250V	110-250V	110-250V	110-250V
Contact Resistance	0.5MΩ MAX			
Termical Temperature Rise	<50K			
Withstand Voltage	2000V			

Mechanical Properties

Mechanical Life	>10000 times
Coupled Insertion Force	45N<F<80N

Protection Information

Protection Class	IP54
Protection Function	Dustproof

Working Environment

Operating Temperature	-30°C~85°C
Storage Temperature	-30°C~85°C

Applied Materials

Case Material	PC+ABS
Flame Retardant Grade	UL94 V-0
Terminal	Copper alloy, silver plating



AC/DC Charging Adapter



Part Name:AC Type 2 Inlet to Tesla Plug
 Model No.:AT-IT2TPNA



Part Name:DC CCS1 Socket to CCS2 Plug
 Model No.:AT-SC1TPC2



Part Name:DC CCS1 Socket to CCS2 Plug
 Model No.:AT-SC1TPNA

Electrical Performance

Charging Interface Type	Type 2 to Tesla	CCS1 to CCS2	CCS1 to Tesla
Rated Current	200A max	250A max	250A max
Rated Power	100KW max	250KW max	250KW max
Operation Voltage	500V DC	300-1000V DC	500-1000V DC
Insulation Resistance	>1000MΩ		
Contact Resistance	<5MΩ		

Mechanical Properties

Mechanical Life	>10000 times
Coupled Insertion Force	45N<F<80N

Protection Information

Protection Class	IP54
Protection Function	Dustproof

Working Environment

Operating Temperature	-30°C~85°C
Storage Temperature	-30°C~85°C

Applied Materials

Case Material	PC+ABS
Flame Retardant Grade	UL94 V-0
Terminal	Copper alloy, silver plating



DC Charging Adapter



Part Name:DC CCS2 Socket to CCS1 Plug
 Model No.:AT-CCS2TCCS1-S



Part Name:DC CCS2 Socket to Telsa Plug
 Model No.:AT-CCS2TSLA-S

Electrical Performance

Charging Interface Type	CCS2 to CCS1	CCS1 to Tesla
Rated Current	200A max	200A max
Rated Power	200KW max	200KW max
Operation Voltage	100-1000V	100-1000V
Insulation Resistance	>1000MΩ	
Contact Resistance	<5MΩ	

Mechanical Properties

Mechanical Life	>10000 times
Coupled Insertion Force	45N<F<80N

Protection Information

Protection Class	IP54
Protection Function	Dustproof

Working Environment

Operating Temperature	-30°C~85°C
Storage Temperature	-30°C~85°C

Applied Materials

Case Material	PC+ABS
Flame Retardant Grade	UL94 V-0
Terminal	Copper alloy, silver plating



AC Type 1 Charging Plug



Type 1 Plug

Input & Output

Part Name	AC Type 1 16A Plug	AC Type 1 32A Plug	AC Type 1 40A Plug
Model No.	AT-PT1116	AT-PT1132	AT-PT1140
Charging Interface Type	Type 1	Type 1	Type 1
Input Voltage	1AC 230V±10%	1AC 230V±10%	3AC 400V±10%
Input Frequency	50/60 HZ	50/60 HZ	50/60 HZ
Output Voltage	1AC 230V±10%	1AC 230V±10%	3AC 400V±10%
Max. Output Power	3.6KW	7.2KW	9.2KW
Max. Output Current	16A	32A	40A
Connection Type	Plug		
Cable Length	Customized		
Number of connection	1		

Core Material

Shell	Thermoplastic, flame retardant grade UL94V-0
Connector Pin	Copper alloy, silver plating
Cable	Inner copper with TPU/TPE

Electrical&Mechanical Performance

Insulation Resistance	>1000MΩ (DC500V)
Terminal Temperature Rise	<50K
Withstand Voltage	2000V
Mechanical Life(Normal use)	>10000 Times
Mating and UN-mating Force	45N < F < 100N
Contact Resistance	0.5mΩ Max
Impact of external Force	1M drop and 2T Run Over Pressure

Working Environment

IP Grade	IP67
Operating Temperature	-30°C~50°C
Storage Temperature	-40°C to +85°C
Relative Humidity	≤95% non-condensation
Maximum Altitude	2000M
Cooling Mode	Natural cooling

Mechanical & Others

Certification	CE, TUV, COC, ROHS
---------------	--------------------



AC Type 1 Charging Plug



Input & Output

Part Name	AC Type 2 Socket IP 16A/32A AC Type 2 Socket 3P 16A/32A	AC Type 2 Plug IP 16A/32A AC Type 2 Plug 3P 16A/32A
Model No.	AT-T2116S, AT-T2132S, AT-T2316S, AT-T2332S	AT-T2116P, AT-T2132P, AT-T2316P, AT-T2332P
Charging Interface type	Type 2 Female Plug	Type 2 Male Plug
Max. Output Current	16A 32A (1/3 Phase)	
Max. Output Power	3.6KW 7.2KW 11KW 22KW	
Input Voltage	AC 230V~400V±10%	
Out Voltage	AC 230V~400V±10%	
Input Frequency	50/60 HZ	
Connection Type	Plug	
Cable Length	Customized	

Core Material

Shell	Thermoplastic, flame retardant grade UL94V-0
Connector Pin	Copper alloy, silver plating
Cable	Inner copper with TPU /TPE

Electrical&Mechanical Performance

Insulation Resistance	>1000MΩ (DC500V)
Terminal Temperature Rise	<50K
Withstand Voltage	2000V
Mechanical Life(Normal use)	>10000 Times
Mating and UN-mating Force	45N < F < 100N
Contact Resistance	0.5mΩ Max
Impact of External Force	1M drop and 2T Run Over Pressure

Working Environment

IP Grade	IP67
Operating Temperature	-30°C~50°C
Storage Temperature	-40°C to +85°C
Relative Humidity	≤95% non-condensation
Maximum Altitude	2000M
Cooling Mode	Natural cooling

Mechanical & Others

Certification	CE, TUV, COC, FCC, ROHS
---------------	-------------------------



DC Charging Plug



**CCS1
DC Plug**

Part Name:DC CCS1 Charging Plug
 Model No.:AT-CCS180P, AT-CCS1125P,
 AT-CCS1200P, AT-CCS1250P



**CCS2
DC Plug**

Part Name:DC CCS2 Charging Plug
 Model No.:AT-CCS280P, AT-CCS2125P,
 AT-CCS2200P, AT-CCS2250P

Electrical Performance

	CCS1	CCS2
Charging Interface Type		
Rated Current	80A/125A/200A/250A	
Operation Voltage	750V	
Insulation Resistance	>2000MΩ(DC1000V)	
Contact Resistance	0.5MΩ MAX	
Termical Temperature Rise	<50K	
Withstand Voltage	5000V	

Mechanical Properties

Mechanical Life	no-load plug in/out>10000 times
Coupled Insertion Force	can afford 1M drop and 2T vehical run over pressure

Working Environment

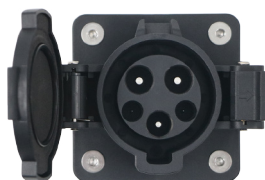
Operating Temperature	-30°C~85°C
-----------------------	------------

Applied Materials

Case Material	Thermoplastic
Flame Retardant Grade	UL94 V-0
Terminal	Copper alloy, silver plating



AC Charging Inlet & Socket



Type 1 EV Socket



Type 2 Male EV Socket



Type 2 Female EV Socket

Input & Output

Part Name	AC Type 1 Inlet 1P 16A/32A/50A	AC Type 2 Inlet 1P 16A/32A AC Type 2 Inlet 3P 16A/32A	AC Type 2 Socket 1P 16A/32A AC Type 2 Socket 3P 16A/32A
Model No.	AT-IT1116, AT-IT1132, AT-IT1150	AT-IT2116, AT-IT2132, AT-IT2316, AT-IT2332	AT-ST2116, AT-ST2132, AT-ST2316, AT-ST2332
Charging Interface Type	Type 1 EV Socket	Type 2 Male EV Socket	Type 2 Female EV Socket
Max. Output Current	16A 32A 50A	16A 32A (1/3 Phase)	
Max. Output Power	3.6KW 7.2KW 11.5KW	3.6KW 7.2KW 11KW 22KW	
Input Voltage	1AC 230V±10%	AC 230V~400V±10%	
Out Voltage	1AC 230V±10%	AC 230V~400V±10%	
Input Frequency	50/60 HZ		
Connection Type	Socket		
Cable Length	Customized		

Core Material

Shell	Thermoplastic, flame retardant grade UL94V-0
Connector Pin	Copper alloy, silver plating
Cable	Inner copper with XLPE/XLPO covered by threaded pipe

Electrical&Mechanical Performance

Insulation Resistance	>1000MΩ (DC500V)
Terminal Temperature Rise	<50K
Withstand Voltage	2000V
Mechanical Life(Normal use)	>10000 Times
Contact Resistance	0.5mΩ Max

Working Environment

IP Grade	Charging Connector: IP44
Operating Temperature	-30°C~50°C
Storage Temperature	-40°C to +85°C
Relative Humidity	≤95% non-condensation
Maximum Attitude	2000M
Cooling Mode	Natural cooling

Mechanical & Others

Certification	TUV	CE
---------------	-----	----



Combo Charging Socket



Part Name:DC CCS1 EV Charging Socket
 Model No.:AT-SCCS1250



Part Name:DC CCS2 EV Charging Socket
 Model No.:AT-SCCS2250

Electrical Performance

Charging Interface Type	CCS1	CCS2
Rated Current	80A/125A/200A/250A	
Operation Voltage	750V	
Insulation Resistance	>2000MΩ(DC1000V)	
Contact Resistance	0.5MΩ MAX	
Termical Temperature Rise	<50K	
Withstand Voltage	5000V	

Mechanical Properties

Mechanical Life	>10000 times
Coupled Insertion Force	70N<F<140N

Working Environment

Operating Temperature	-30°C~85°C
-----------------------	------------

Applied Materials

Case Material	Thermoplastic
Flame Retardant Grade	UL94 V-0
Terminal	Copper alloy, silver plating